

WAG CORPORATION

Vision Locator

Desktop Software User's Guide

Revision – 3.0
Date - 12/21/2004

VISION LOCATOR

Desktop Software User's Guide

© WAG Corporation
386 Highway 6 W
Tupelo, MS 38801
Phone 662.844.8478 • Fax 662.844.7247

Table of Contents

End User License Agreement	2
Installation	4
The Toolbar	4
Setup Options	4
• Convert Database	4
• Sorting	4
○ Make Layers	4
○ Field Length	5
• Lat/Lon Setup	5
• PC Card Drive	5
• Import Path	5
• Merge .shp Files	5
• .txt To .shp	5
Importing Data	6
Erasing the PC Card	6
Prepare PC Card	6
Create Points	6
Attribute Key	7
Register Software	7
Software Version Information	7

End User License Agreement

YOU SHOULD CAREFULLY READ THE FOLLOWING END USER LICENSE AGREEMENT BEFORE INSTALLING THIS SOFTWARE PROGRAM.

This software program, any printed materials, any on-line or electronic documentation, and any and all copies and derivative works of such software program and materials (the "Program") are the copyrighted work of WAG Corporation. All use of the Program is governed by the terms of the End User License Agreement, which is provided below ("License"). The Program is solely for use by end users according to the terms of the License Agreement. Any use, reproduction or redistribution of the Program not in accordance with the terms of the License Agreement is expressly prohibited. By installing the accompanying software you are acknowledging and accepting the following END USER LICENSE AGREEMENT.

END USER LICENSE AGREEMENT

1. Limited Use License.

WAG Corporation ("WAG") hereby grants, and by installing the Program you thereby accept, a limited, non-exclusive license and right to install and use one (1) copy of the Program for your use on either a home or portable computer.

2. Ownership.

All title, ownership rights and intellectual property rights in and to the Program and any and all copies thereof (including but not limited to any titles, computer code, themes, objects, text, catch phrases, locations, concepts, artwork, methods of operation, moral rights, any related documentation, and "applets" incorporated into the Program) are owned by WAG or its licensors. The Program is protected by the copyright laws of the United States, international copyright treaties and conventions and other laws. All rights are reserved. The Program may contain certain licensed materials and WAG's licensors may act to protect their rights in the event of any violation of this Agreement.

3. Responsibilities of End User.

A. Subject to the Grant of License hereinabove, you may not, in whole or in part, copy, photocopy, reproduce, translate, reverse engineer, derive source code, modify, disassemble, decompile, create derivative works based on the Program, or remove any proprietary notices or labels on the Program.

B. The Program is licensed to you as a single product. Its component parts may not be separated for use on more than one computer.

C. You are entitled to use the Program for your own use, but you are not entitled to: (i) sell, grant a security interest in or transfer reproductions of the Program to other parties in any way, nor to rent, lease or license the Program to others without the prior written consent of WAG. (ii) exploit the Program or any of its parts for any commercial purpose other than its designed intention.

4. Program Transfer.

You may permanently transfer all of your rights under this License, provided the recipient agrees in writing to the terms of this License and you agree to remove the Program from your home or portable computer.

5. Termination.

This License is effective until terminated. You may terminate the License at any time by destroying the Program. WAG may, at its discretion, terminate this License in the event that you fail to comply with the terms and conditions contained herein. In such event, you must immediately destroy the Program.

6. Export Controls.

The Program may not be re-exported, downloaded or otherwise exported into (or to a national or resident of) any country to which the U.S. has embargoed goods, or to anyone on the U.S. Treasury Department's list of Specially Designated Nationals or the U.S. Commerce Department's Table of Denial Orders. By installing the Program, you are agreeing to the foregoing and you are representing and warranting that you are not located in, under the control of, or a national or resident of any such country or on any such list.

7. Limited Warranty.

WAG expressly disclaims any warranty for the Program, and Manual(s). The Program and Manual(s) are provided "as is" without warranty of any kind, either express or implied, including, without limitation, the implied warranties of merchantability, fitness for a particular purpose, or noninfringement. The entire risk arising out of use or performance of the Program and Manual(s) remains with the User.

8. Limitation of Liability.

NEITHER WAG, ITS SUBSIDIARIES, AFFILIATES OR LICENSORS SHALL BE LIABLE IN ANY WAY FOR LOSS OR DAMAGE OF ANY KIND RESULTING FROM THE USE OF THE PROGRAM INCLUDING, BUT NOT LIMITED TO, LOSS OF GOODWILL, WORK STOPPAGE, COMPUTER FAILURE OR MALFUNCTION, OR ANY AND ALL OTHER COMMERCIAL DAMAGES OR LOSSES.

9. Equitable Remedies.

You hereby agree that WAG would be irreparably damaged if the terms of this License were not specifically enforced, and therefore you agree that WAG shall be entitled, without bond, other security, or proof of damages, to appropriate equitable remedies with respect to breaches of this License, in addition to such other remedies as WAG may otherwise have available to it under applicable laws.

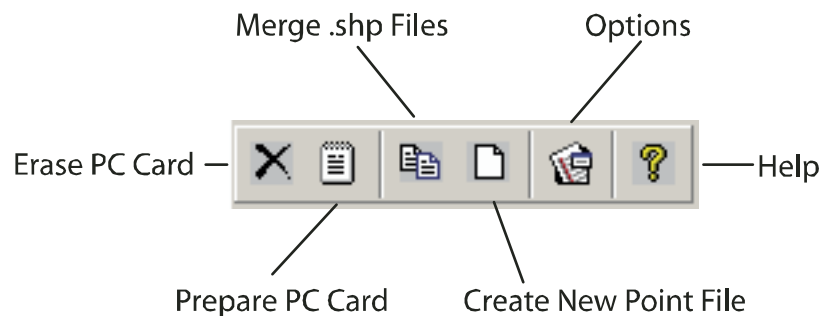
10. Miscellaneous.

This License shall be deemed to have been made and executed in the State of Mississippi and any dispute arising hereunder shall be resolved in accordance with the law of the State of Mississippi. This License may be amended, altered or modified only by an instrument in writing specifying such amendment, alteration or modification executed by both parties. In the event that any provision of this License shall be held by a court or other tribunal of competent jurisdiction to be unenforceable, such provision will be enforced to the maximum extent permissible and the remaining portions of this License shall remain in full force and effect. This License constitutes and contains the entire agreement between the parties with respect to the subject matter hereof and supersedes any prior oral or written agreements.

Installation

Insert the WAG Vision Locator CDROM into your CDROM drive. The CDROM will start automatically and display the Welcome screen. Click “Continue” to move to the installation screen. Click the “Install Vision Locator” button to start the installation process. Follow the on-screen prompts to install the software to the desired location on your computer. The installation creates an icon in your start menu as well as on your desktop.

The Toolbar



Setup Options

Start the program by double clicking the Vision Locator icon on your desktop. Click on Options on the Tools menu and choose the options you wish to use. The options that are grayed out will be activated after you register the software.

- Convert Database

Choose this option if you want to convert the points database into a plain text file that can be viewed using a text editor such as Microsoft© Notepad. The points database contains all of the points marked including the Latitude, Longitude, Date, Time, and Description. If you choose this option the text file will be created in the “Maps” folder located in the imported data folder.
- Sorting
 - Make Layers

Choose this option if you marked multiple types of objects in the same job and want them sorted into separate jobs for easier selection when viewing. This option also checks the Convert Database since it has to perform that function in order to separate the data into layers. The layers will be sorted based on the Attribute that was selected when the point was marked.

- Field Length
This is the number of characters that the software compares when making layers. Example: You went out and marked water valves, water meters, and fire plugs. When you marked the fire plugs you entered the serial number for each plug. Now you want to import the data and sort it into separate layers. If you sort it by the full value in the notes field you will have each fire plug as a separate layer since it has the serial number in the field. But if you only sort by the first 8 characters you will have only 3 layers – fire plugs, water valves, and water meters. You could sort by the first 5 characters and you would get 2 layers – water meters and water valves would be combined into the same layer.
- Lat/Lon Setup
This is where you choose the way you enter the lat/lon coordinates when you manually enter a point to return to. Your choices are Decimal Degrees, Degrees:Minutes:Seconds, or Degrees:DecimalMinutes. The default is Decimal Degrees.
- PC Card Drive
This is the drive letter that is assigned to your pc card that you will be importing the data from. All available drive letters will be displayed in the dropdown list. If you do not see the drive letter in the list then make sure your pc card is inserted correctly in the drive.
- Import Path
This is the location on your hard drive that it is going to import the data into. This can be any directory on your computer but it defaults to the directory where you installed the Vision Locator program. To change to a different location click the button that has 3 dots in it. This button is located to the right of the line that contains the current import path. This will open a window where you can select a different drive or navigate to a different folder on the drive. Once you select the folder you want to import into, click the “Save” button.
- Merge .shp Files
Using this utility, you can merge multiple point files into a single .shp file. This is useful when you have multiple layers of the same types of points that you want to combine into a single layer. After you start the utility click the “Add Files” button to select the files you want to merge into a single point layer. The “Remove File” button can be used to remove any files that you do not wish to merge at this time. Enter the 3 digit code that you wish to use to identify the point file (see “Attribute Key”). Then click the “Merge” button. The new files will be created in the “C:\Merged” folder.
- .txt To .shp
This utility is used to convert a formatted .txt file to a .shp file. This is useful after you convert your .dbf file to a .txt file. The .txt file can be edited using any text editor (Notepad, Wordpad, etc.) to make corrections to the files. Then the .txt file can be converted back to a .shp file to replace the original .shp file that had errors.

Importing Data

Once you have selected the options you want to use and have set your PC Card location and your import path you are ready to import data from your card. Start this process by clicking on the “Import PC Card” button. Then you will see a text box that displays “Click here and type a name for this job”. When you click in the box the text will disappear and you can type a name for the data you are importing. This will be the new folder that is created when the data is imported.

Next, click on the “Import Data” button to continue with the import or the “Cancel” button to cancel and return to the main screen. A box will be displayed that will show what is being done. When the import is finished and any conversion or sorting has been completed a message will be displayed, letting you know everything has finished, and give you the option of opening the folder containing the imported data.

Erasing the PC Card

After successfully importing the data from the PC Card you should erase the PC card to avoid importing the data multiple times into multiple locations. By clicking on this button you erase everything on the card including your attributes file. If you have a customized attributes file, make sure you have a copy of it saved in the “pointdat” folder in the directory where you installed the Vision Locator program. After the card is erased a new box will open to let you prepare your PC Card for use by writing a new attributes file to the card. Simply select the attributes file you want to use and click “Prepare Card” to complete the operation.

Prepare PC Card

This opens the same box that is displayed after erasing the card that allows you to select the attributes file that you want to use. Use this function if you want to change attributes files without erasing the card.

Create Points

To access this feature click the “Tools” menu option at the top and click “Create Points”. This opens the window to let you manually enter points to locate using the Vision Locator. You will see a different window here depending on which option you chose in the “Lat/Lon Setup” under the “Options” menu. Enter your Latitude and Longitude in the appropriate boxes and enter a description for the point in the notes box. The description can be up to 29 characters including spaces and punctuation marks. Click the “Save Point” button after each point you enter to save it in the database. After you have entered all points you want to locate click the “Upload File” button to create the files on the PC Card necessary to locate the points using the Vision Locator. The “Clear Points File” button will clear all of the points that have been entered.

Attribute Key

Click on “Help” and click “Attribute Key” to view the list of attributes with the number associated with them. The number beside the attribute will be the number used in the filename for that layer. Click “Print” to open a printable report of the attribute key. Click “Edit List” to remove unused attributes from the list.

Register Software

Click this to generate a code to use to register your copy of the Vision Locator Software and unlock the advanced features.

Software Version Information

Click on Help to get the version number of the Vision Locator Desktop Software, as well as the registration information.

© WAG CORPORATION
386 HIGHWAY 6 WEST
TUPELO, MISSISSIPPI 38801
PHONE 662.844.8478 • FAX 662.844.7247